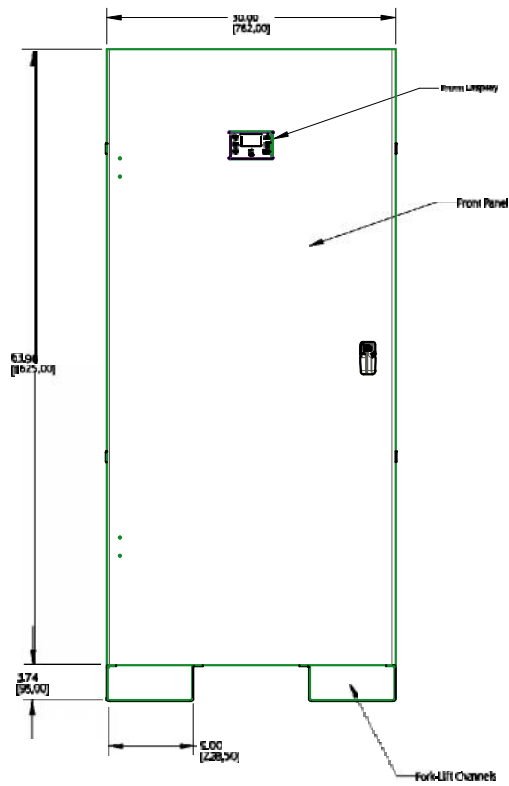
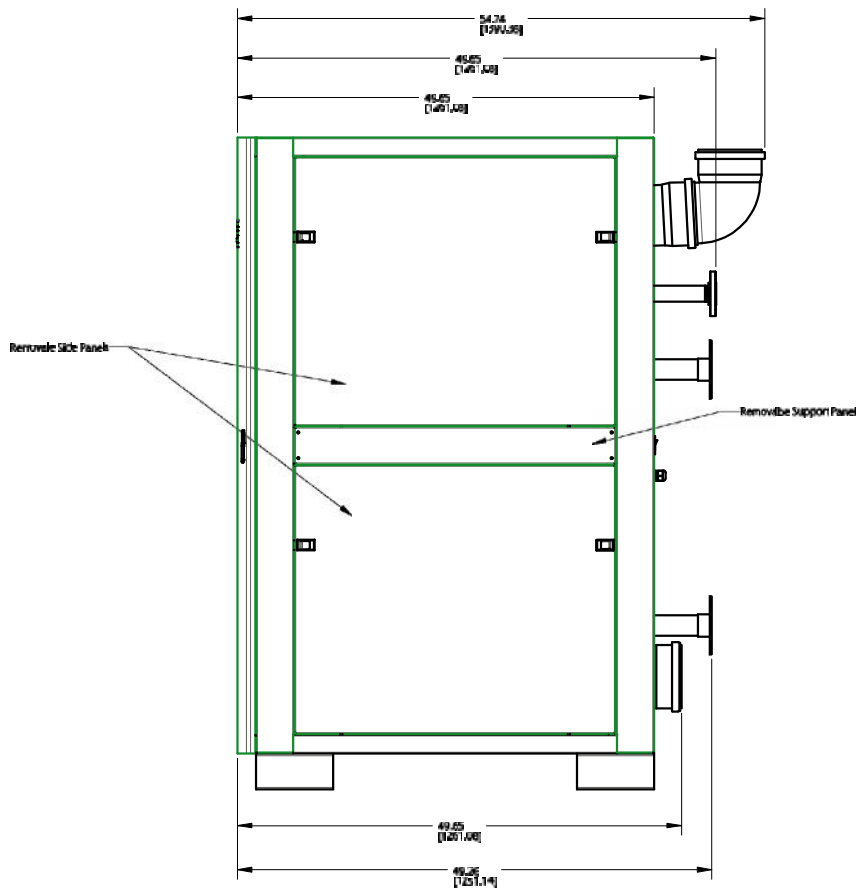


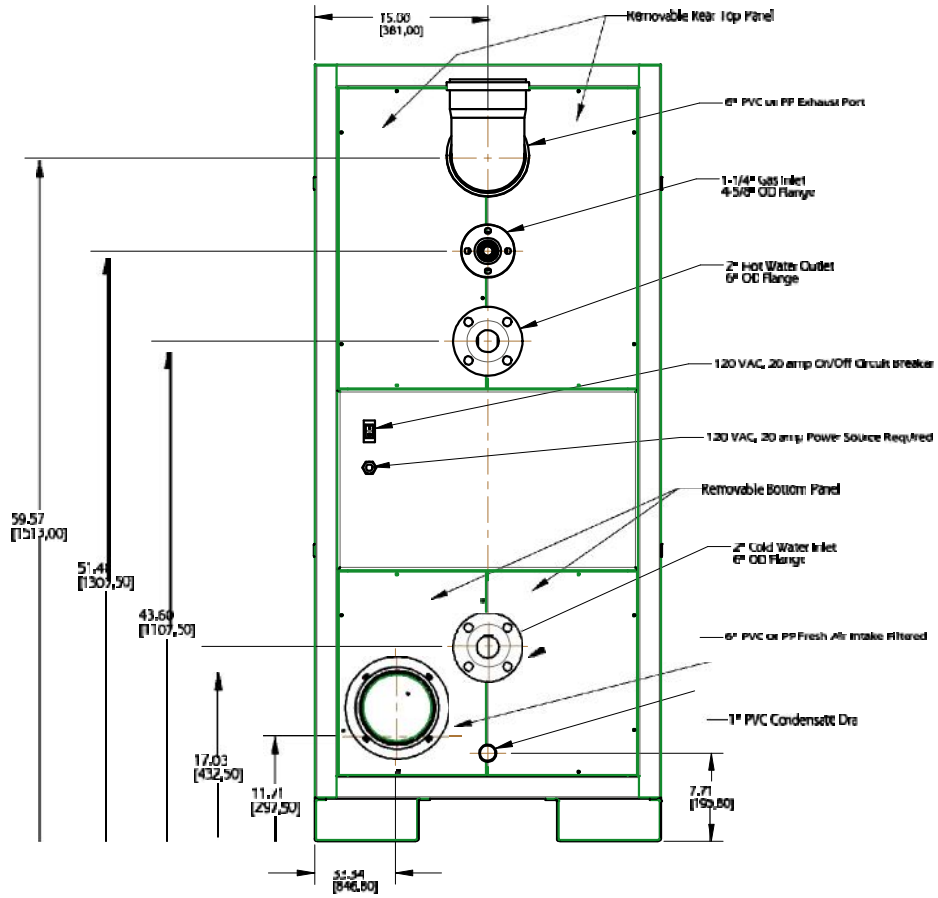
Specifications	Models	
	iQ750	iQ1000
Type	Indoor, Floor Mounted, On demand hot water boiler	
Fuel	Preset for NG / LP convertible without additional parts	
Minimum Input (Btu/h)	30,000	
Maximum Input (Btu/h)	750,000	1,000,000
Maximum Output (Btu/h)	702,750	932,000
Thermal Efficiency	94%	93%
Turn Down Ratio (TDR)	25:1	33:1
Water Inlet / Outlet Connections	2" NPT	
Gas Inlet Connection	1-1/4" NPT	
Condensate Drain Connection	3/4" PVC	
Maximum Condensate Flow Rate (GPH)	5.4	7.2
Dimensions H X W X D (inches)	64 X 30 X 43.3 (48 cu. ft)	
Service Clearances	Recommend 24" on all sides	
Weight (lbs)	525	590
Venting Type	Direct Vent (2 pipe - intake & exhaust), Power vent (1 pipe - exhaust only)	
Venting Materials (USA)	Sch. 40 PVC, Sch. 40 CPVC, Polypropylene, Stainless Steel	
Venting Materials (Canada)	Type BH Gas Vent Classes: II A (PVC), II B (CPVC), II C (Polypropylene), I (AL294C SS)	
Vent Size (Diameter)	6" Ø	
Max 6" Vent Length - Single Pipe / Power Vent	220 ft.*	130 ft.*
Max 6" Vent Length - Two pipe / Direct Vent	120 ft.*	65 ft.*
* Venting Note: From the maximum lengths above, deduct 5 ft. per 90° elbow and 2 ft. per 45° elbow		
Ignition	Electronic Spark Ignition	
Temperature Range	100°F – 190°F	
Temperature Stability	+/- 4°F	
Installation Location Ambient Temperature	40°F – 130°F	
Safety	Flame Rod, Thermal Fuse, Overheat Prevention Device, Fan Speed Monitor, Flue Temperature Monitor, Blocked Vent Detector, Dual Flame Sensing	
Water Pressure Min / Max (PSIG)	30 / 160	
NG/LP- Min. Dynamic Gas Pressure (Full Fire)	2.5" (non-corrugated, black iron)	
NG/LP - Maximum Static Gas Pressure	14"	
Gas Pressure for Adjustments	8" for NG, 11" for LP	
Electrical	120V AC, 60 Hz	
Power Consumption	Max 13 Amps, 24W (Standby)	Max 17 Amps, 32W (Standby)
Internal Water Volume (gallons)	3	4
Features and Approvals	iQ750	iQ1000
4 unit Cascaded High Turn Down	100:1	133:1
Built-In Redundancy	Multiple Heat Exchangers w/ Individual Control	
Cascading	Masterless, 4 units, Automatic rotation	
Common Venting	Yes, Up to 4 units	
Heat exchanger	Expandable, Stainless 316L	
Appliance Certification to ANSI Z21.10.3	ETL	
ASME	HLW	
Performance GPM	iQ750	iQ1000
Hot Water Capacity, 45F Rise	31.4	41.6
Hot Water Capacity, 70F Rise	20.2	26.7
Hot Water Capacity, 90F Rise	15.7	20.8
Hot Water Capacity, 100F Rise	14.1	18.7
Hot Water Capacity, 140F Rise	10.1	13.4
Warranty	Heat Exchanger coil – 6 years, All Other Parts – 1 year	



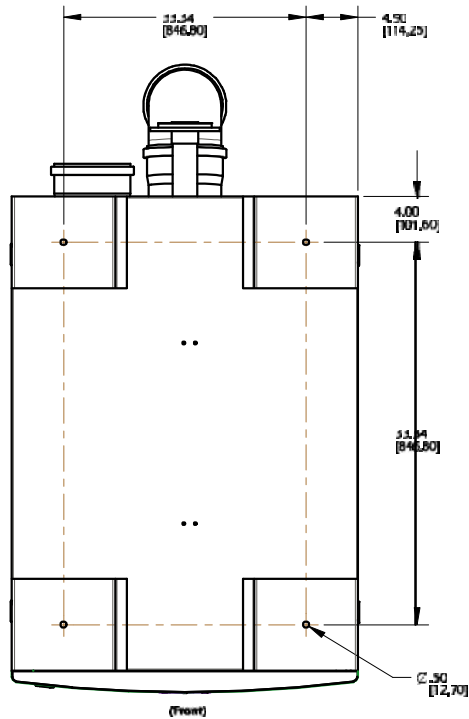
Front View



R/H Side View



Rear View



Bottom View